



Company Profile

| About Us

History

Established in 1997, Lovely specializes in general corporation signage. From this position we were early to recognize the opportunity for digital imaging and its specific application to large format printing for both internal and external applications and we also work Specialist of facade work, Aluminum composite panel cladding, Structural glazing, Curtain wall, Stone dry cladding, Tiles dry cladding, Fundermax cladding, Corten steel cladding Spider glazing, Solid aluminum cladding.

Industry Experience

Lovely is Proud to have been fulfilling some of most successful Corporate companies with their large format digital printing and facade needs more than 25 years.

Esteem Clients

Some of them are Samsung Mobile & Electronics, Xiaomi, Realme, Vivo, Sony, LG, Panasonic Voltas, Flacon pump, Angel Pump, Impel Motors, Natraj Pipe & Cable, Captain Tractor, CMK Electro, BN LED, V-Light, Harmony Group, RK University, Pooja Technocast, GSRTC, Avadh, Eicher, Gujarat Gas, Super Gas, Seagram's, Larsen & Turbo Limites Just to Name a Few.



**Your Totally Indoor &
Outdoor Publicity / Printing
One Stop Solution**

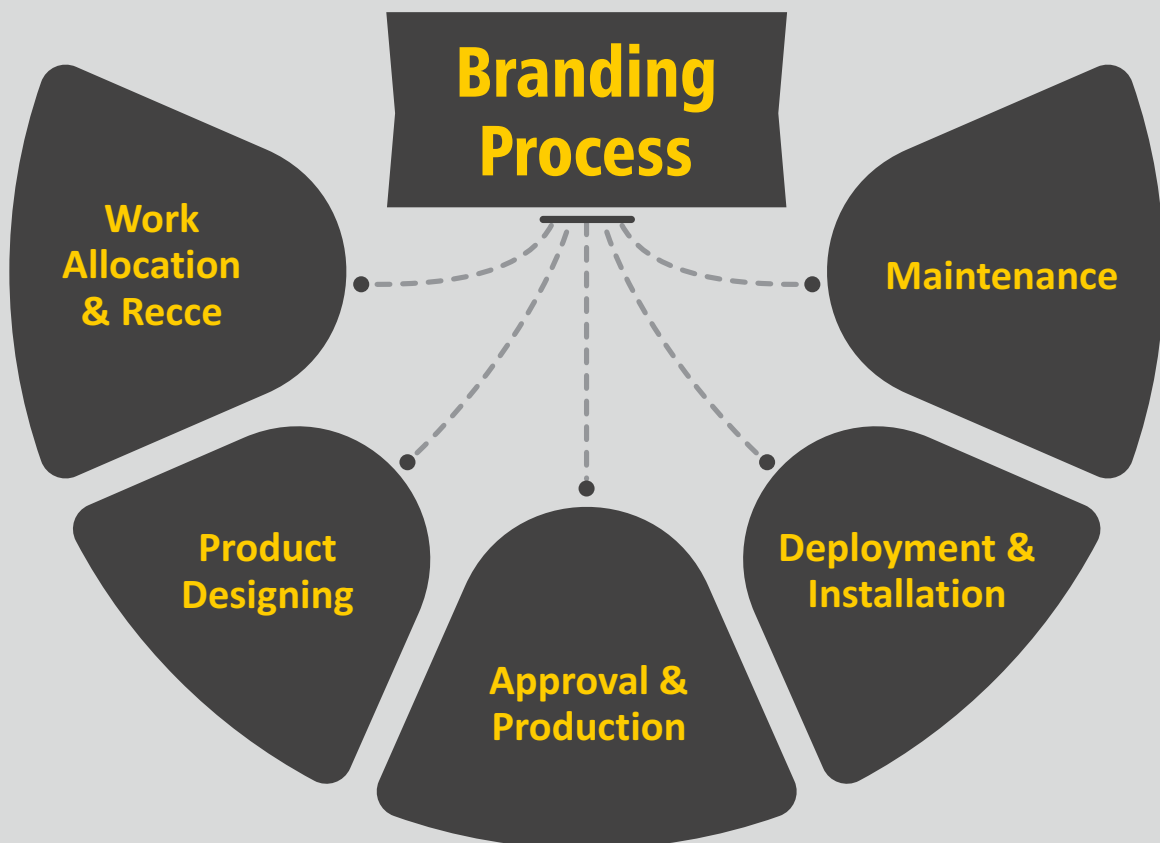
Our **Service**

Indoor Services

- Vinyl
- One Way Vision
- Vinyl on Sunboard
- Glass Film
- Translite
- Clipon
- Fabric
- Canvas
- Acrylic Sandwich
- Roll Up Standee
- Cutout Standee
- MDF Standee

Outdoor Services

- Frontlit Board
- Glow Sign Board
- Vinyl Cut GSB
- ACP Board
- ACP Pylon
- Name Plates
- Acrylic Letters
- LED Letters
- Steel & Brass Letters
- Channel Letters
- LED Display
- MS Pipe Standee
- Hoardings





Service



Timing



Safety



Flexibility



Quality

**Our
Strong
Assets**

Company Profile

Surat

Working Area 9000 Sq.Ft.

Working Staff Member 60

HP Latex - 5 ft Printer

Epson Surecolour - 5ft Printer

Starfire Printer - 10.5 feet

CNC Router Machine - 8 x 4 Feet

Laser Cutting Machine - 8 x 4 Feet

Metal Channel Letter Bending Machine

Plotter Print & Cut. Machine - 48 Inch

Fabrication, Pasting & Lamination Unit

Rajkot

Working Area 8000 Sq.Ft.

Working Staff Member 35

Epson Surecolour - 5ft Printer

Konica 512i Printer - 10.5 feet

CNC Router Machine - 10 x 4 Feet

Laser Cutting Machine - 8 x 4 Feet

Metal Channel Letter Bending Machine

Plotter Print & Cut. Machine - 48 Inch

Fabrication, Pasting & Lamination Unit

Our Machinery

To Provide the Best Quality Printing with in the Time Constraint,
We Keep Our Machineries Latest & Updated.

**Konica 512i
Printing Machine**



**Epson Surecolor S30670
Printing Machine**



**Mehta EVA 2
Laser Cutting Machine**



**HP Latex
Printing Machine**



**Channel
Bending Machine**



**Xljet Cold Lamination
Machine**



Router Cutting Machine

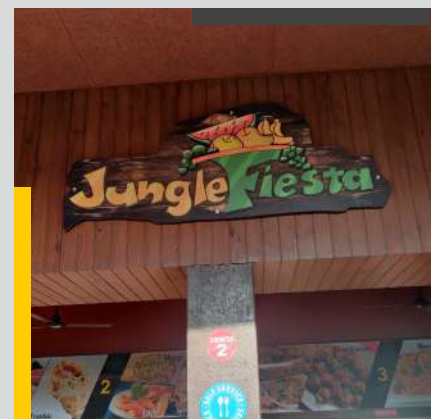
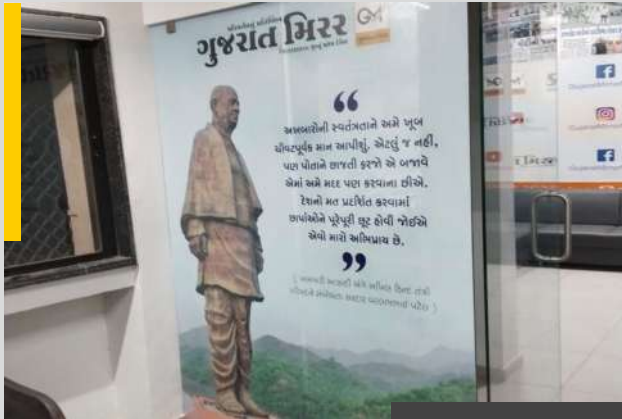


Plotter Cutting Machine

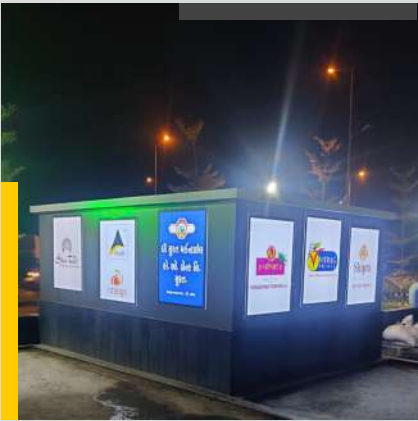
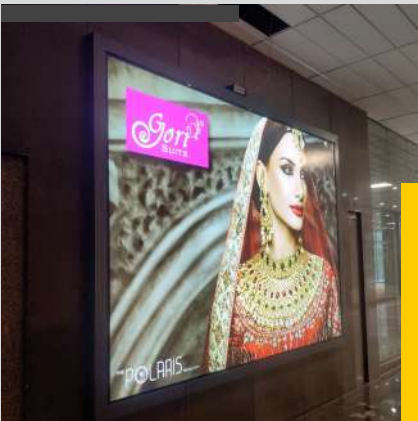


Machinery

INSHOP BRANDING



CLIPON & FABRIC BOX



NAME PLATES



OUTDOOR BRANDING



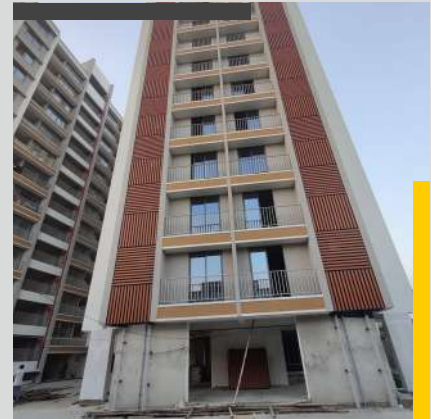
GLOW SIGN BOARD



ACP BOARD & CLADDING



FACADE / ELEVATION WORK



ACRYLIC LETTERS



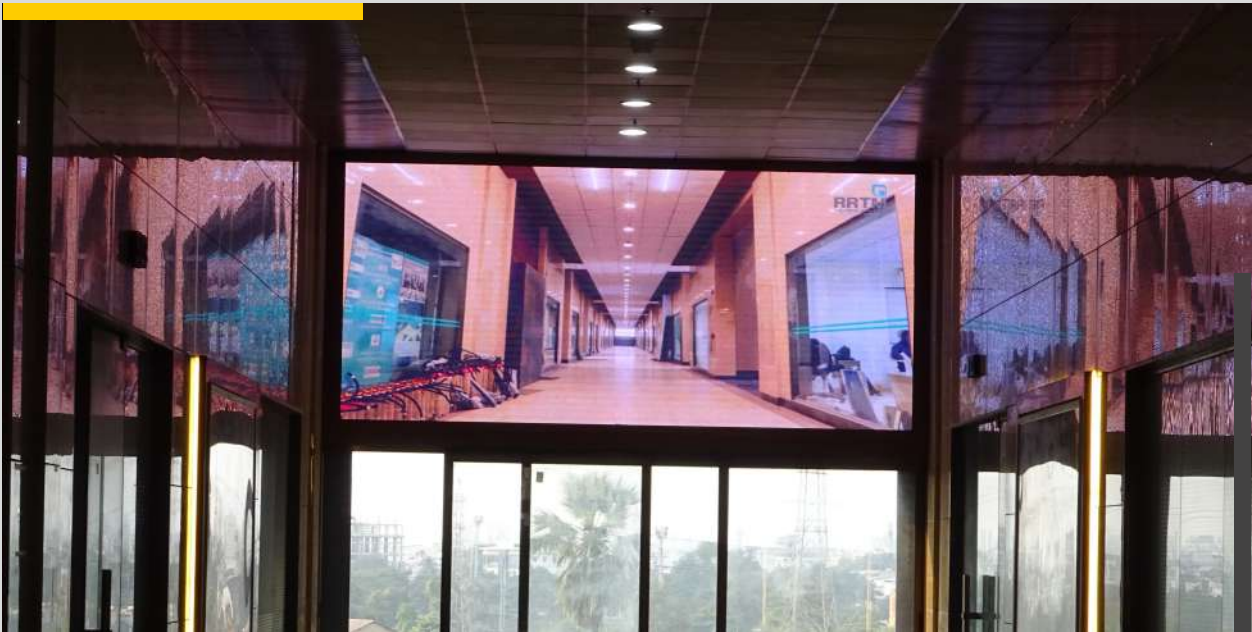
LED LETTERS



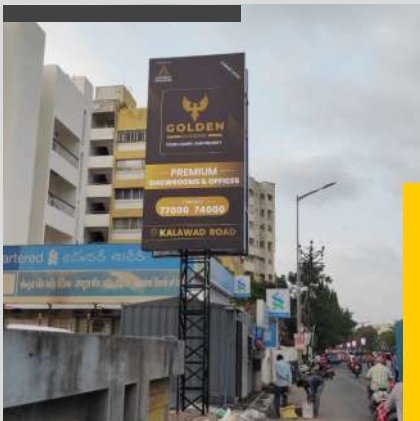
METAL LETTERS



LED DISPLAY



HOARDING



Our Valuable Clients



SAMSUNG

VOLTAS

realme

Panasonic



KIEH
STEEL... FOR LIFE



SONY



Haier



THE
NEEL'S
SANJAYRAJ



& Many More....

WE BUILD YOUR DESTINY

Since 1997



📍 5/6, Gokul Diamond Center (BSMT),
Below Pakvan Restaurant,
Nr. Geetanjali Petrol Pump,
Varachha Road, Surat - 395 006

📞 93743 66003 / 93768 66001

✉️ print@lovelyimage.in



📍 Maruti Ind. Area, Plot No.50,
Inside Charbhuj Marble Street,
Nr. Old Jakat Naka, Gondal Road,
Rajkot - 360 004

📞 88188 96396 / 93768 66013

✉️ lovelycrayon@gmail.com

🌐 www.lovelyimage.in